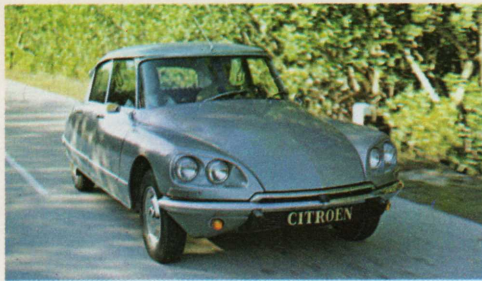


D Special DS21 DS21 Pallas



Citroen



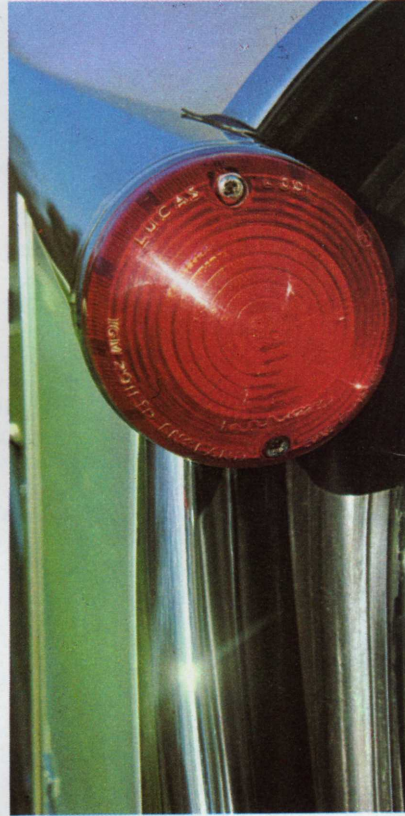
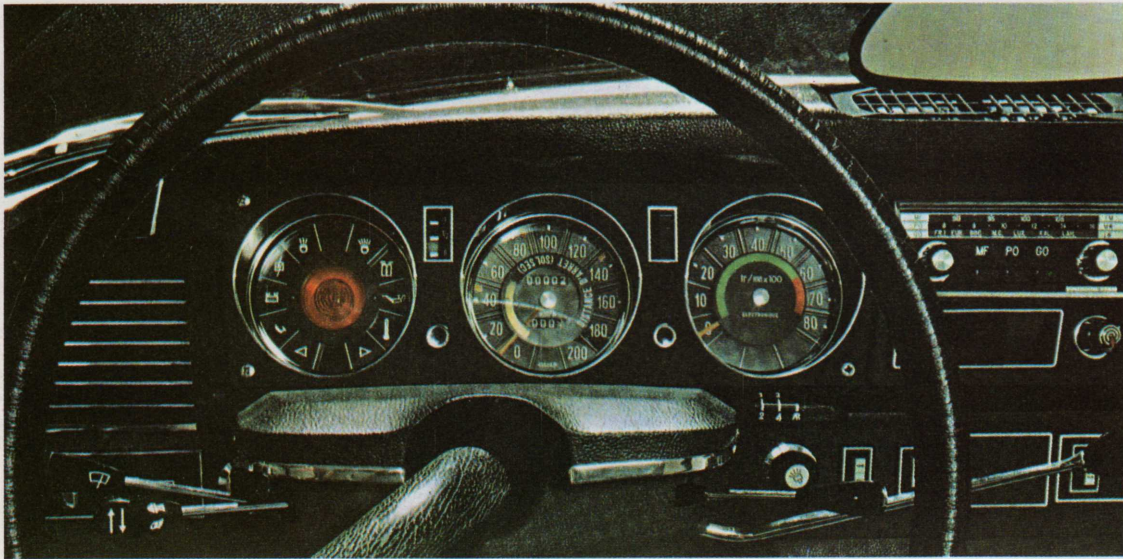
CITROËN D SERIES—NEW AS 1970

Even more sophisticated aerodynamic design. Even cleaner, swifter lines for front end, hood and fenders.

New quad headlights. A newly engineered instrument panel. A tachometer.

That's the new Citroën D series for 1970.

There's new stability and performance and silence.



comfort in the 100 to 115 mph range. And great new cruise economy, as well—up to 29 mpg!

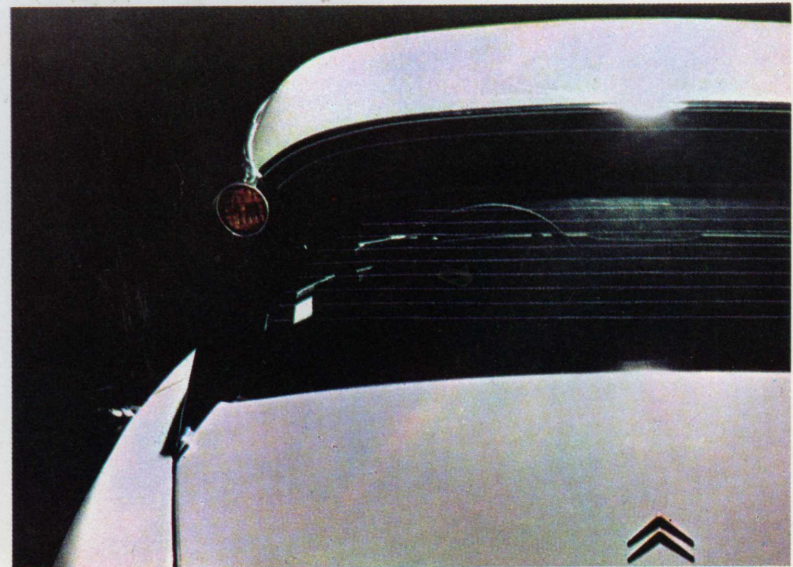
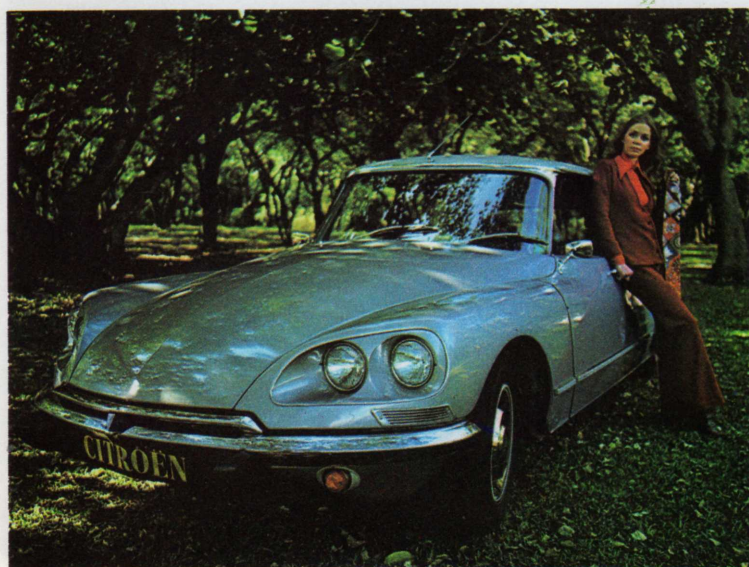
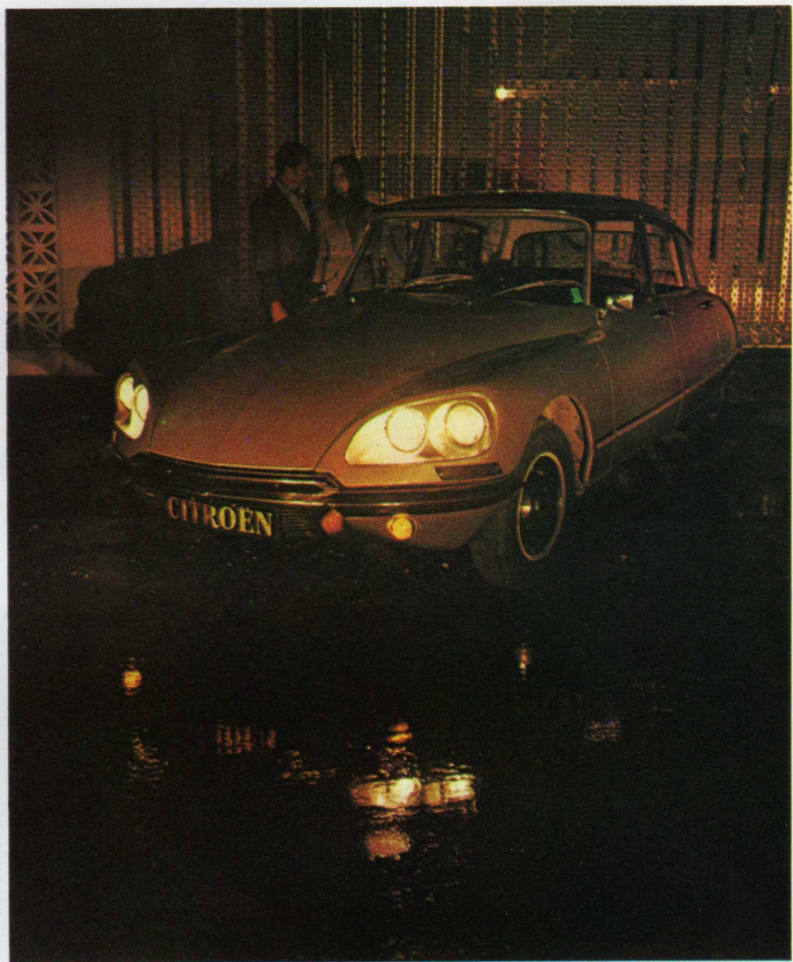
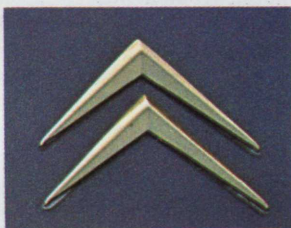
Four-cylinder, five-bearing hemi units from 1985 to 2175 cc. Your choice of four-speed, all-synco transmission or Citromatic Drive depending on model.

Then there's Hydropneumatic suspension with its constant-level ride. Adjustable road clearance.

Optional new rack-and-pinion steering. And of course, Front Wheel Drive.

Interiors are more elegant than ever, too. Fully carpeted. Fully lined with fabric and padded vinyl. Leather throughout, if you like.

See the new Citroen D series for the now decade: D Special, DS-21, DS-21 Pallas. And try one today!



TECHNICAL SPECIFICATIONS CITROEN DS-21

Displacement—cc: 2175 cc. **Displacement—cu. in.:** 132.7 cu. in. **Compression Ratio:** 8.75 to 1. **SAE Power @ rpm:** 117 bhp @ 5750 rpm. **Max. Torque S.A.E.:** 126 ft./lbs. @ 3000-3500 rpm. **Central Spark Plug Location:** Yes. **Bore:** 3.5 in. 90 mm. **Stroke:** 3.3 in. 85.5 mm. **Combustion Chamber:** Hemispherical. **Cylinder Head:** Aluminum alloy. **Intake Manifold:** External. **Oil Filter:** Internal with bi-pass, plus screen in sump. **Radiator:** Copper core 60 mm. **Cooling System:** Water pump & thermostat. **Fan:** 8 Blade nylon. **Fuel Pump:** Mechanical. **Alternator:** 35A x 12V with voltage regulator. **Battery:** 12 Volt-55 AH. **Valve Arrangement:** 60—OHV. **Carburetor:** Double barrel Weber 28 x 36 DDE. **Exhaust:** Dual system with rear expansion chamber. **Cam Shaft:** 4 bearings, high lateral position chain drive. **Pistons:** Recessed dome. **Connecting Rods:** Positive centered cap. **Crankshaft:** Main Bearings: 5. **Clutch:** Single Plate Dry Type. **Gear Box:** 4 speed fully synchromesh with manual shift, or New Quick-Action CITROMATIC-DRIVE depending on model. **Citromatic-Drive:** Automatic hydraulic Quick-Action control with centrifugal governor and new throttle regulator. **Final Drive:** Spiral Bevel—8 x 35, 4.375 to 1. **Gear Ratios:** 1st—14.21 to 1, 2nd—8.05 to 1, 3rd—5.30 to 1, 4th—3.73 to 1. R—13.80 to 1. **Drive Shaft:** Double constant velocity tripod universals. **Front Wheel Drive:** Standard. **Brakes:** Power assisted Dual Independent System with Proportional action: Front: Inboard Disc with two opposed pistons caliper. Rear: Drum.

Emergency Brakes: Mechanical on front disc: Autonomous system with separate pads. **Brake pressure warning:** Light on dash. **Brake Pad Wear Warning:** Light on dash. **Brake Cooling:** Large underpan ducts. **Exhaust Emission:** Controlled by Air Injection. **Steering System:** Rack & Pinion, 3¼ turns lock-to-lock. Power assist standard. **Wheels:** Steel, 5 studs. **Tires:** New All-Weather Michelin Radial Steel Cord with Asymmetrical Construction and Tread Design: 180 x 380 size. Front pressure: 30 lbs. Rear pressure: 27 lbs. **Suspension System:** Hydropneumatic. **Variable Ground Clearance:** Yes. **Power Jacking:** Yes. **Constant Level Ride:** Yes. **Integral Hydropneumatic Shock Absorbers:** Special High Speed. **1 Piece Body Frame All Steel Construction:** Yes. **Factory Rust Proofing:** Prepaint by electrophoresis. **Underpan:** Full length. **Headlights:** Sealed beam, U.S. Model. **Horns:** Custom triple. **Weight:** 2855 lbs. sedan. **Safety Glass As-1 As-2:** Yes. **Tinted Glass:** Optional. **Wheelbase:** 123". **Overall length:** 190.5". **Overall Width:** 70.5". **Trunk Capacity:** 17.5 cu. ft. **Fuel Tank Capacity:** 17 gallons. **Crank Case Capacity:** 4 quarts. **Gear Box Capacity:** 2 quarts. **Radiator Capacity:** 11 qts. Single Heater. 14 qts. Dual. **Gas Mileage:** 25/27 mpg. **Heater & Defrosters with Electric Blower:** Standard. **Rear Window Defroster:** Standard. **Custom Deluxe Equipment:** "Pallas" model. **Custom Leather Interior:** Optional on "Pallas." **Folding Rear Center Arm Rest:** Standard. **Folding Front Center Arm Rest:** Optional. **Custom Air Conditioning:** Optional—Factory Installed. **Custom AM-FM or AM Radios:** Optional. **Roof Antenna:** Optional. **Reclining Bucket Seats:** Standard. **"Leather-Tex" Upholstery:** No

Citroen reserves the right to change and/or modify equipment and/or specifications without notice and without responsibility to previous models, on any model at any time.

cost option.—N/A on Pallas. **Dual 2-Speed Electric Wipers:** Standard. **Dual Windshield Washers:** Standard. **Cigarette Lighter:** Standard. **Precision Electric Clock:** Standard. **Models Available:** Sedan: 5 passengers, 4 doors. **Station Wagon:** 7/9 passengers.

TECHNICAL SPECIFICATIONS CITROEN D SPECIAL

Displacement—cc: 1985 cc. **Displacement—cu. in.:** 121.1 cu. in. **Compression Ratio:** 8 to 1. **SAE Power:** 91 bhp @ 5750 rpm. **Max. Torque SAE:** 106 ft./lbs. @ 3000 rpm. **Bore:** 86 mm—3.3 in. **Stroke:** 85 mm—3.3 in. **Combustion Chamber:** Hemispherical aluminum Alloy head. **Valve Arrangement:** 60—OHV—Rotating. **Cylinders:** Detachable wet sleeves. **Carburetor:** 34 PBIC Solex with dashpot. **Battery:** 12 Volt-60 AH. **Alternator:** 35A x 12 V. with voltage regulator. **Pistons:** Domed type. **Camshaft:** High lateral position chain drive, 4 bearings. **Crankshaft:** 5 Main bearings. **Oil Filter:** Internal with bi-pass plus screen in sump. **Cooling System:** Water pump and thermostat. **Exhaust:** Dual System. **Exhaust Emission Control:** By Air Injection. **Clutch:** Single Plate Dry Type. **Gear Box:** 4-speed fully synchromesh with manual shift. **Final Drive:** Spiral Bevel—8 x 35, 4.375 to 1. **Gear Ratios:** 1st—14.23 to 1, 2nd—7.91 to 1, 3rd—5.27 to 1, 4th—3.73 to 1. Rear—13.80 to 1. **Front Wheel Drive:** Drive Shaft with constant velocity universals. Inner: tripod. Outer: double. **Braking System:** Dual Independent circuits with proportional action: Front: Inboard Discs with underpan cooling ducts. **Power Assist:** Standard. Rear: Drums. **Emergency Brakes:** Autonomous system with pads on Front Discs. **Steering System:** Rack and Pinion Power Assist. Optional.

Turning Circle: 36 feet. **Wheels:** Steel, 5 studs. **Tires:** Radial Standard 180 x 380. **Pressure:** Front 30 lbs. Rear: 27 lbs. **Suspension System:** HYDROPNEUMATIC with: Adjustable ground clearance. Power jacking. Constant level ride. Anti-roll bars Front & Rear. **Body Construction:** All Steel Body-Frame Unit. **Factory Rust Proofing:** Prepaint by Electrophoresis. **Headlights:** 4 sealed beams (U.S. models). **Windshield Wipers:** 2-speed Electric. **Windshield Washers:** Dual Standard. **Safety Glass:** As-1 As-2. **Tinted Glass:** Optional. **Horns:** Dual Standard. **Weight:** 2855 lbs. sedan. **Wheelbase:** 123". **Overall length:** 190.5". **Overall Width:** 70.5". **Overall Height:** 58". **Track:** Front: 59". Rear: 51". **Ground Clearance:** Normal: 5¾". Adjustable to 11¼". **Fuel Tank Capacity:** 17 gallons. **Crankcase Capacity:** 5¼ quarts. **Gear Box Capacity:** 2 quarts. **Radiator Capacity:** 11 qts. Single Heater. 14 qts. Heavy Duty Heater. **Speed:** Over 100 mph. **Gas Mileage:** Up to 30 mpg. **Heater & Defrosters with Electric Blower:** Standard. **Rear Window Defroster:** Standard. **Safety Belts:** Front: 2 Harness Type II. Rear: 2 Lap belts Type I. **Reclining Bucket Seats:** Standard. **Seat Height Adjuster:** 9 position—Optional. **Vinyl Upholstery:** Standard. **Folding Rear Center Armrest:** Standard. **Front Center Armrest:** Optional. **Headrest:** Standard. **Electric Clock:** Standard. **Trunk capacity:** 17.5 cu. ft. **Custom Air Conditioning:** Optional—Factory Installed. **Models Available:** D Special, 4-door.

Citroen

Your Authorized Citroen Dealer is: